

REASONING AND PROOFING SERVICES FOR SEMANTIC WEB AGENTS

Kalliopi Kravari¹, Konstantinos Papatheodorou²,
Grigoris Antoniou² and Nick Bassiliades¹

¹Dept. of Informatics, Aristotle University of Thessaloniki, Greece

²Institute of Computer Science, FORTH, Greece
Department of Computer Science, University of Crete, Greece

Overview

- **Motivation**
- *Standard rule/logic language use*
- *Proposal*
- *Semantics*
- *Proofs*
- *Proof Validation*
- *Our approach*
 - EMERALD
 - Reasoners
 - DR-Prolog Rasoner
- **Conclusions – Future Work**

Motivation

SW brings interoperability for web information systems

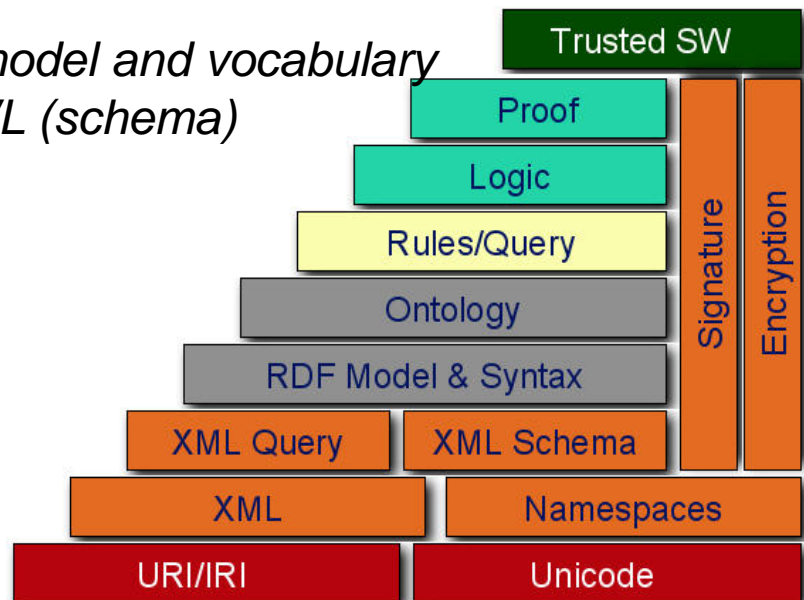
Agents need this interoperability

- *to work seamlessly in the web*
- *to achieve tasks on behalf of the users*

Interoperability is in several levels:

1. Syntactic – *use of common language formats*
e.g. XML (parsers)

2. Semantic – *use of common data model and vocabulary*
e.g. RDF (data), OWL (schema)



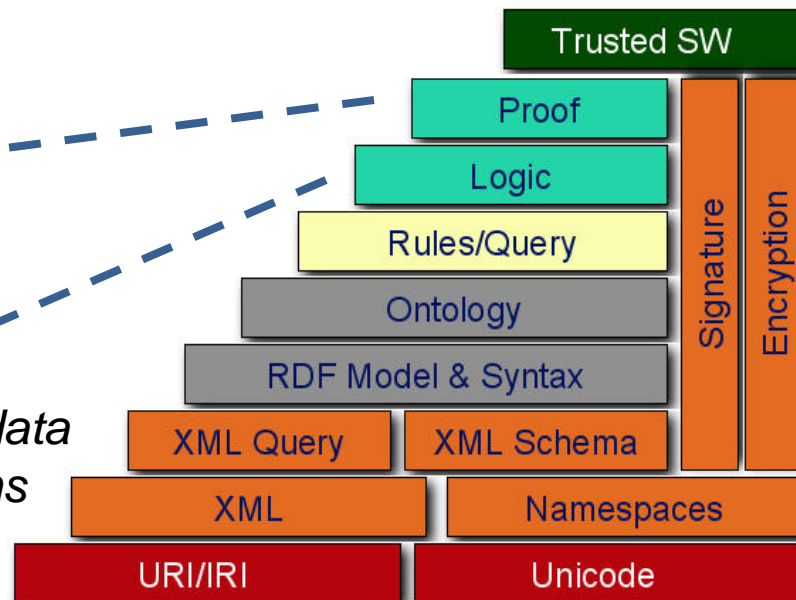
Motivation

*These interoperability solutions are
→ more or less stable in the current SW standards*

The next level of interoperability needed is in Logic and in Proof

*explanations why
certain conclusions were made*

*i.e. rules of inference that manipulate data
in order to infer new data or conclusions*



Motivation

Logic / rules have a new standard (**RIF**)

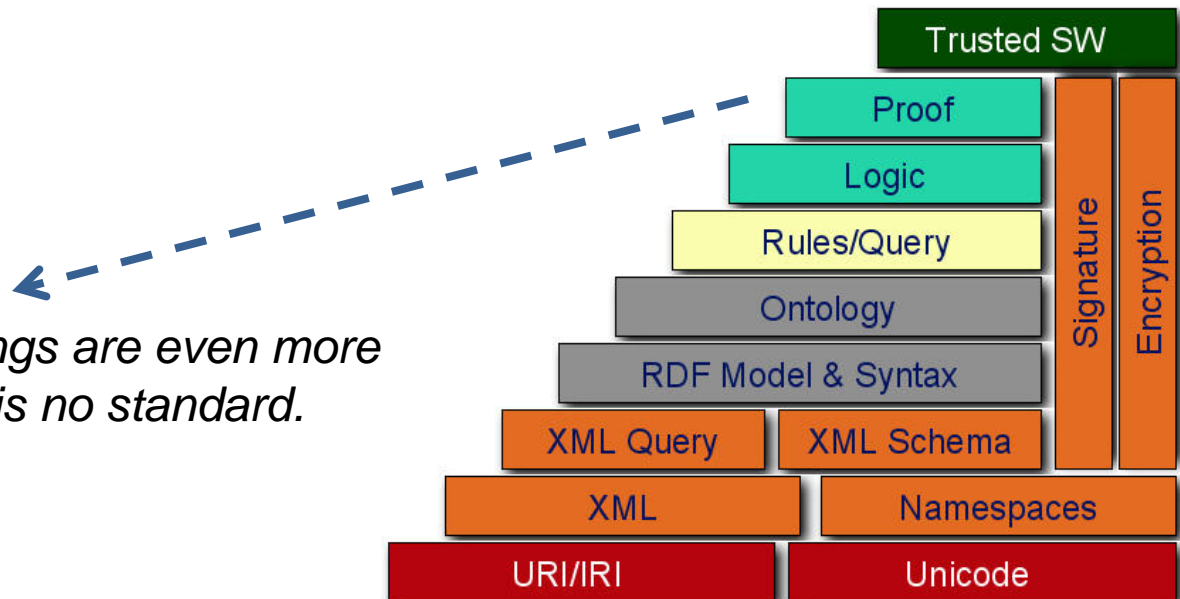
→ but its adoption is not as wide as *OWL, RDF, XML*

WHY?

Rules Standards DEFINE not a single language

BUT a family of languages

- *Share same syntax*
- *Differ in semantics (entirely/ partially)*

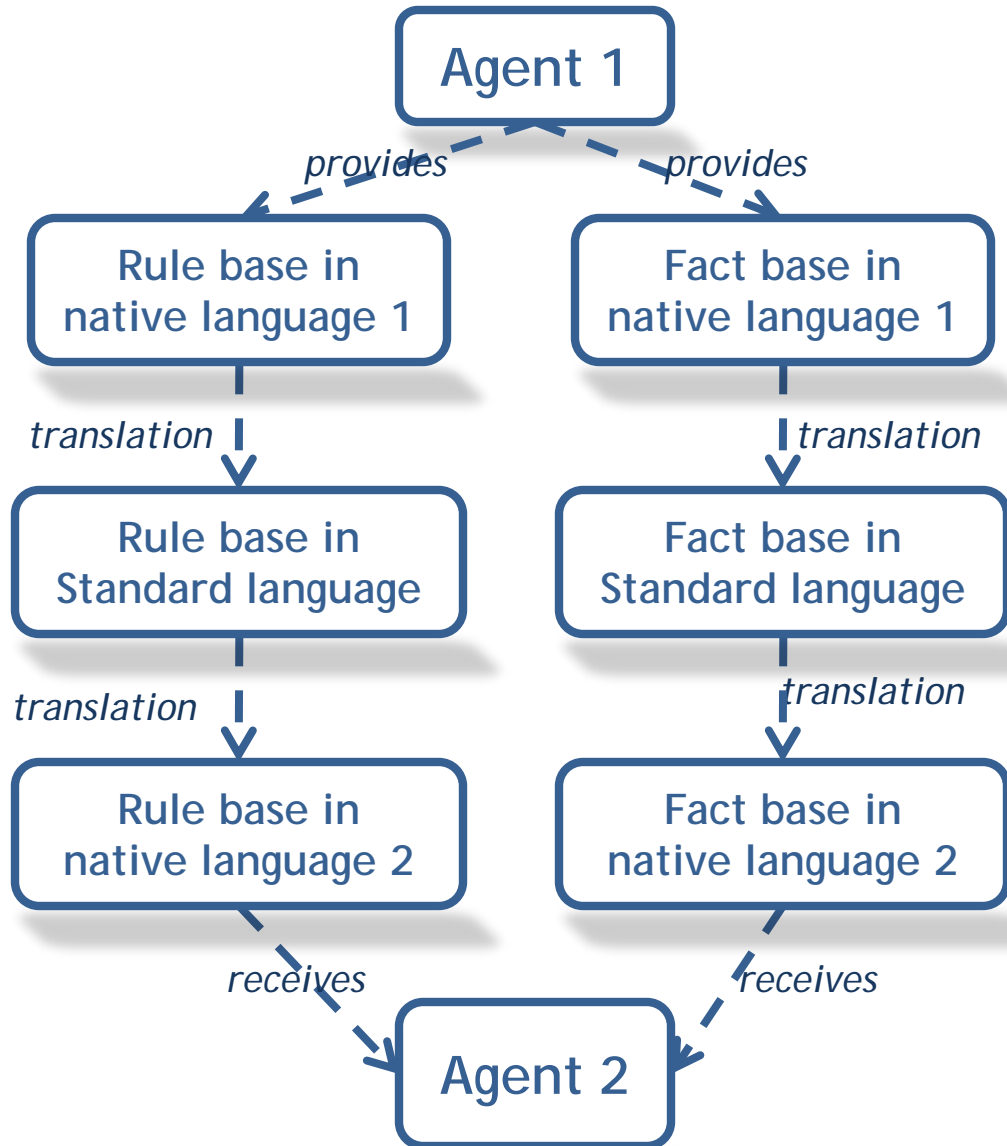


In the Proof layer things are even more primitive since there is no standard.

Overview

- *Motivation*
- *Standard rule/logic language use*
- *Proposal*
- *Semantics*
- *Proofs*
- *Proof Validation*
- *Our approach*
 - *EMERALD*
 - *Reasoners*
 - *DR-Prolog Rasoner*
- *Conclusions – Future Work*

Standard rule/logic language use



FACT CHAIN:

1. Usually entire chain in RDF, or
2. Translation from-to RDF is more easily achievable

Overview

- *Motivation*
- *Standard rule/logic language use*
- *Proposal*
- *Semantics*
- *Proofs*
- *Proof Validation*
- *Our approach*
 - *EMERALD*
 - *Reasoners*
 - *DR-Prolog Rasoner*
- *Conclusions – Future Work*

Proposal

complete translation between rule languages is:

- *hard to achieve*
- *sometimes not possible at all*
 - *because of the diversity in semantics between rule languages*

Our solution:

→ ***trusted third-party reasoning services (in an agent framework)***

- *Responsible for executing the inference on the original rule base*
- *No transformation*

Overview

- *Motivation*
- *Standard rule/logic language use*
- *Proposal*
- *Semantics*
- *Proofs*
- *Proof Validation*
- *Our approach*
 - *EMERALD*
 - *Reasoners*
 - *DR-Prolog Rasoner*
- *Conclusions – Future Work*

Semantics

But then how the semantics of the exchanged rule base are going to be understood by the receiving agent?

Semantics of a rule base \equiv conclusions that can be derived



sending only the conclusions, the semantics are communicated

Why should agent2 trust that agent1 run the rule base completely?

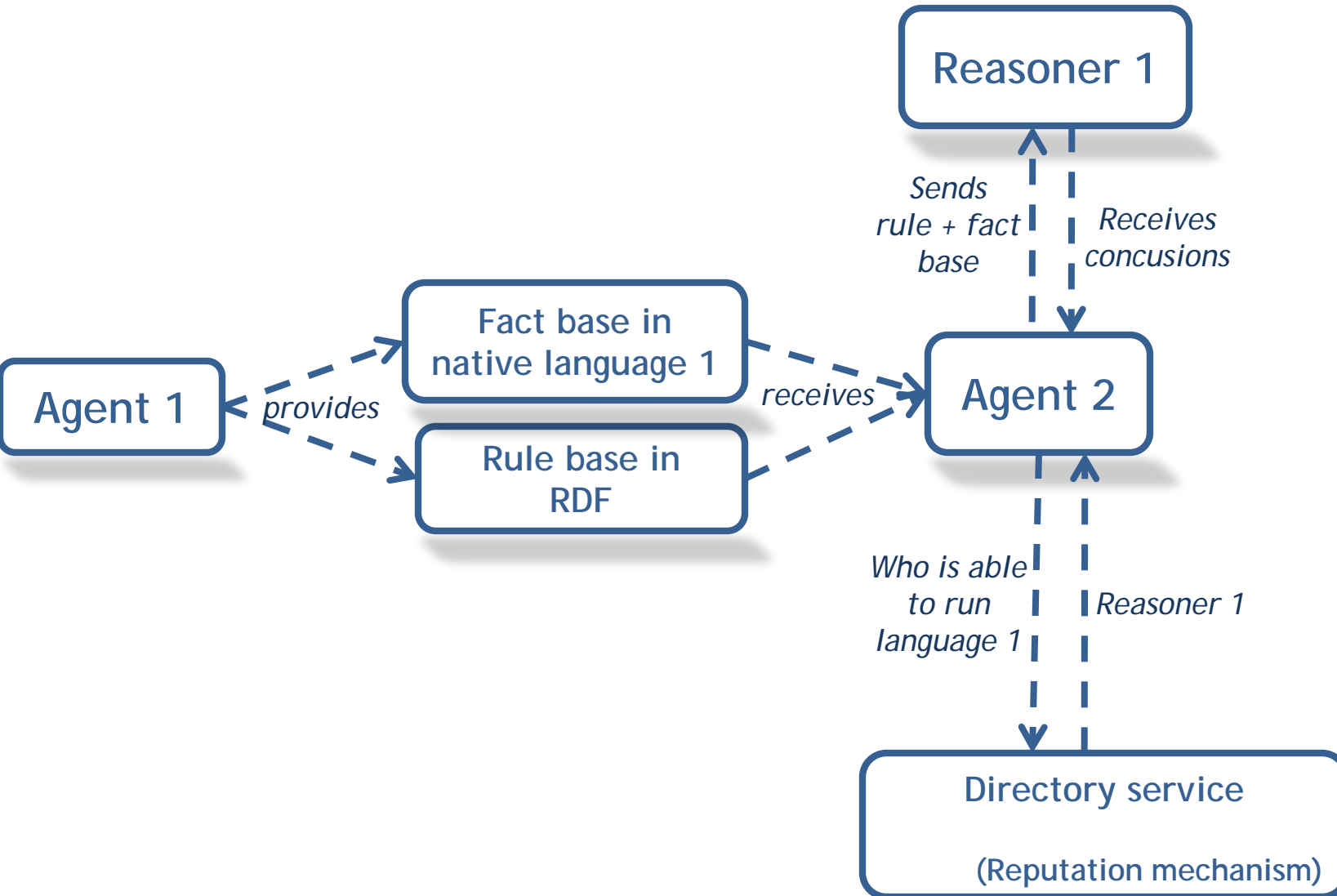


It shouldn't!

it can trust

- an independent agent with good reputation*
- supposing it's a "good" reasoning service provider*

Semantics



Overview

- **Motivation**
- **Standard rule/logic language use**
- **Proposal**
- **Semantics**
- **Proofs**
- **Proof Validation**
- **Our approach**
 - **EMERALD**
 - **Reasoners**
 - **DR-Prolog Rasoner**
- **Conclusions – Future Work**

Proofs

Sometimes it is not enough to trust the results

The receiving agent might want:

- *proof that some conclusion is correct*
- *an explanation of how the results was drawn*

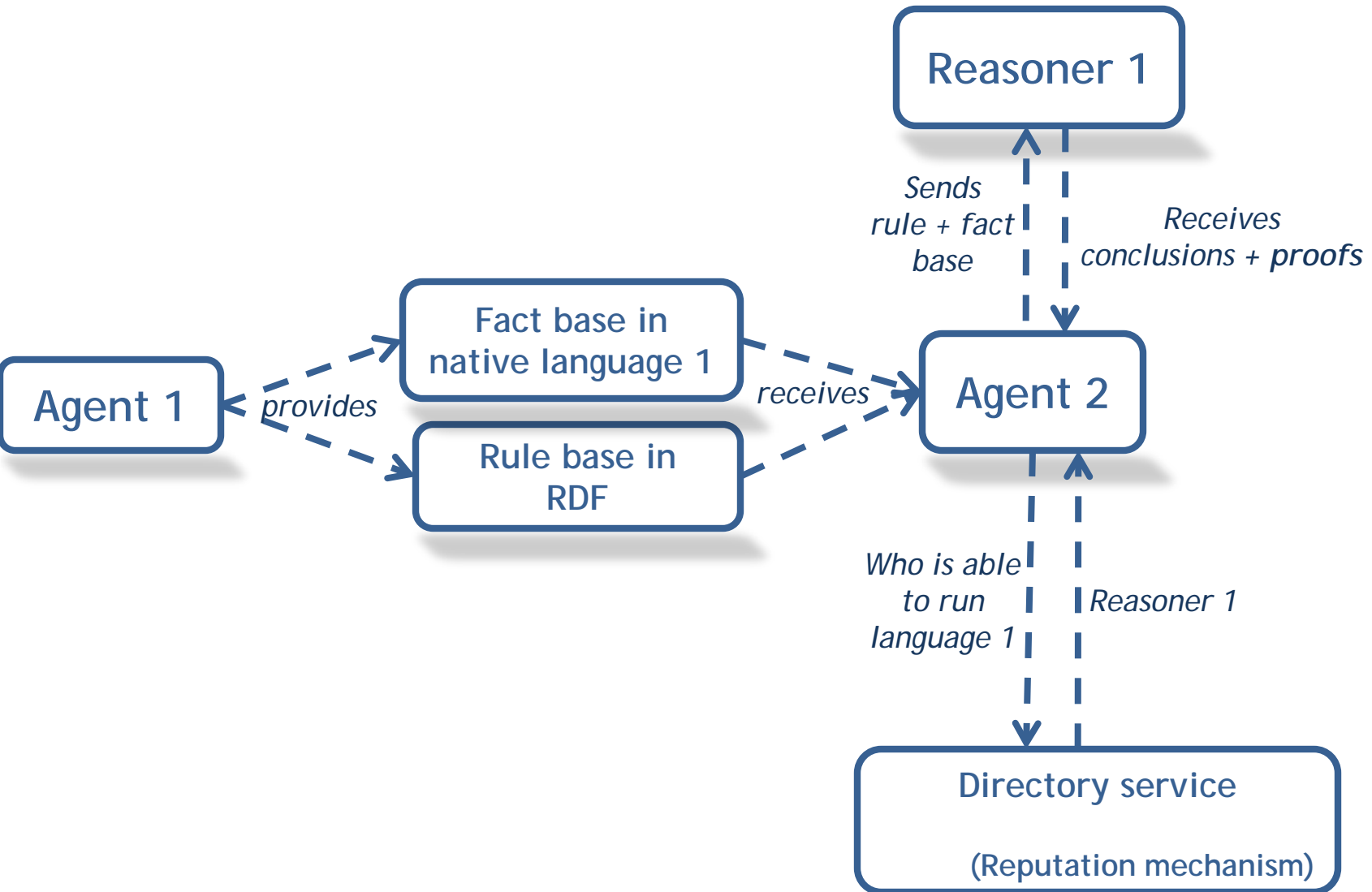


- *Verify that the reasoner did a good job*
- *Present the explanations to its human user*



The reasoning service facility needs → a proof generation facility

Proofs



Overview

- *Motivation*
- *Standard rule/logic language use*
- *Proposal*
- *Semantics*
- *Proofs*
- *Proof Validation*
- *Our approach*
 - *EMERALD*
 - *Reasoners*
 - *DR-Prolog Rasoner*
- *Conclusions – Future Work*

Proof Validation

assist agents in validating the proofs provided by other agents



proof validation service

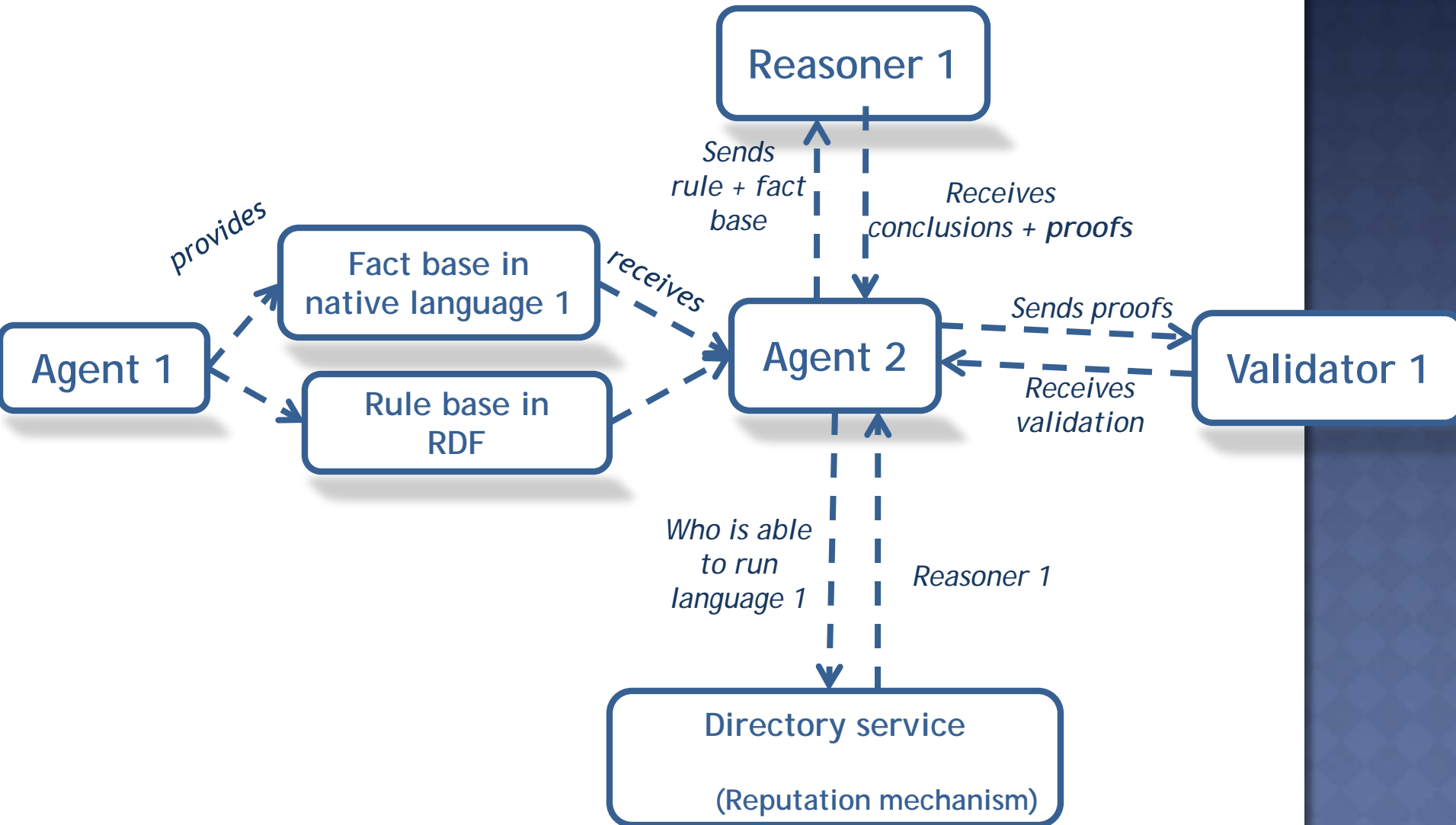
Input: rule base, fact base, set of conclusions, set of proofs about conclusions

Output: validation (or not) of the proofs

Implemented as:

- *third-party, independent and trusted service,*
- *preferably different from the reasoning service that provided the original conclusions + proofs*

Proof Validation



Overview

- *Motivation*
- *Standard rule/logic language use*
- *Proposal*
- *Semantics*
- *Proofs*
- *Proof Validation*
- *Our approach*
 - *EMERALD*
 - *Reasoners*
 - *DR-Prolog Rasoner*
- *Conclusions – Future Work*

Our approach

*Having all the above → **trust** in the exchanged rules, conclusions and proofs
→ **will be increased***

***key point:** reputation and trust in these reasoning/validation services*

***Our proposal:** a complete instantiation of such a framework*


EMERALD (extended JADE MAS)

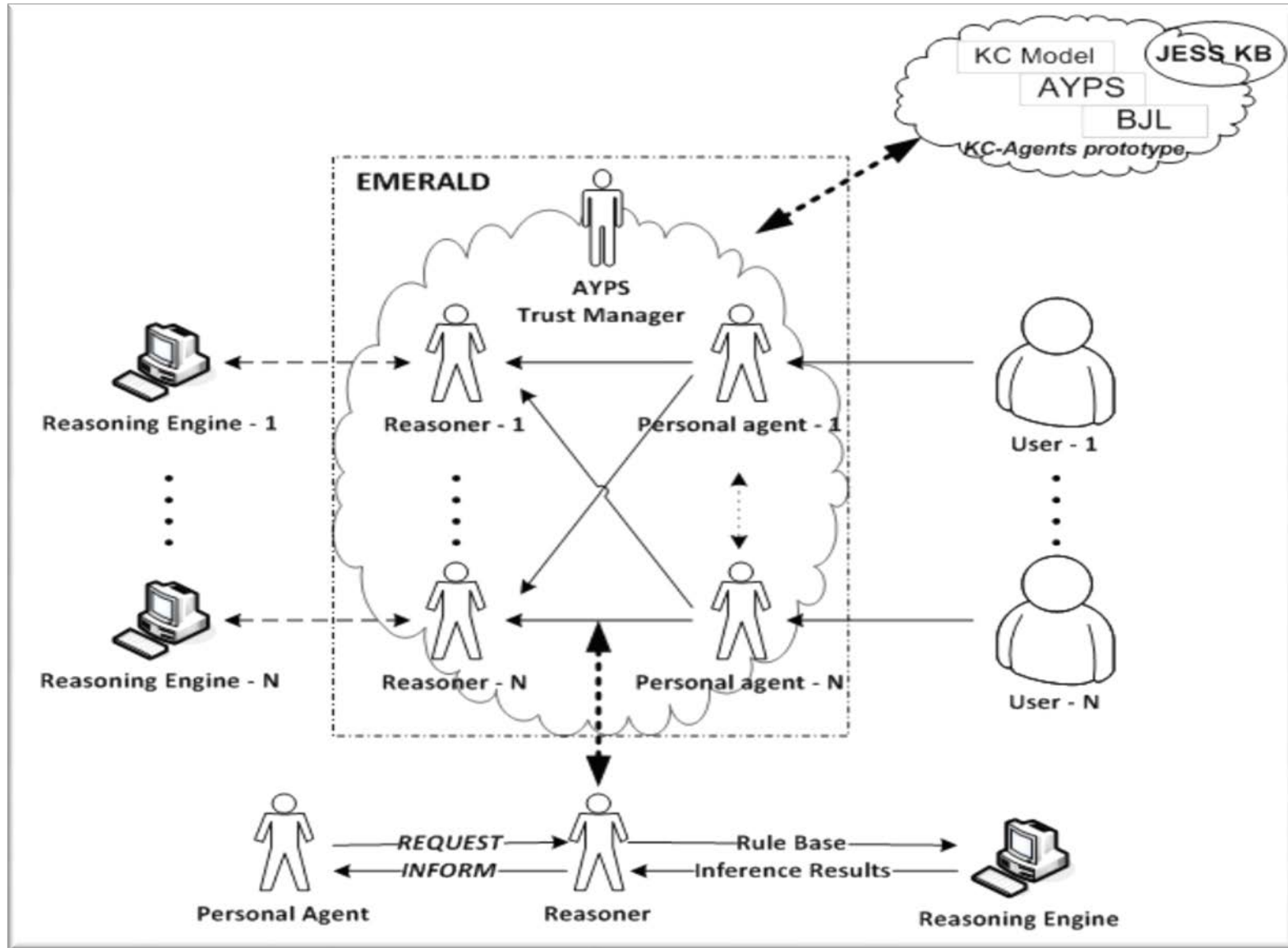

implements many reasoning services (called Reasoners)



Here: *DR-Prolog Reasoner (operating on defeasible rules)*

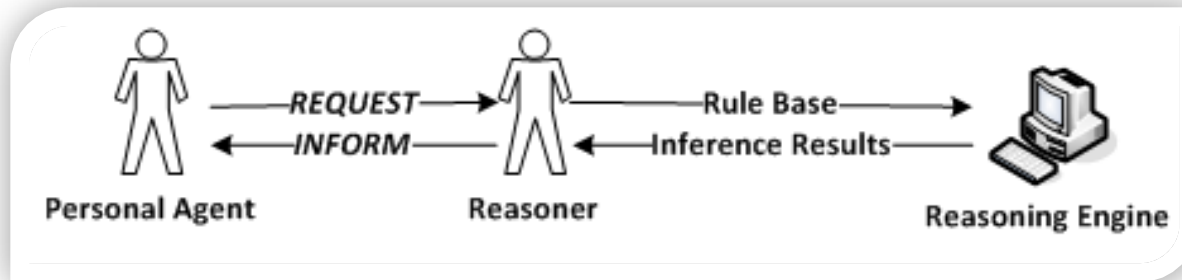
EMERALD

A Multi-Agent Knowledge-Based Framework



Reasoners

- *Built as agents*
- *Act as like web services*
- *Provide the reasoning services*
- *Launch an associated reasoning engine*



Reasoner:

- *stands by for new requests*
- *gets a valid request → launches the reasoning service → returns the results*

DR-Prolog Reasoner

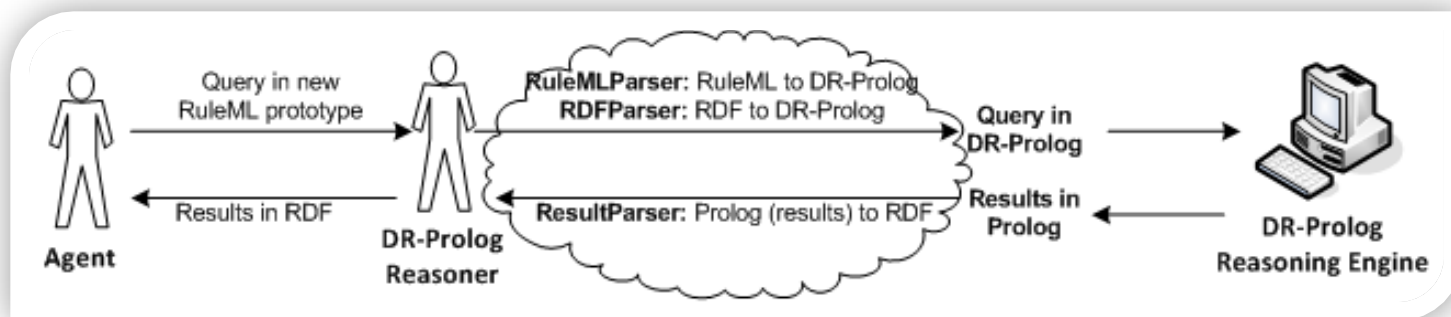
DR-Prolog¹: *built on-top of Prolog*

DR-Prolog Reasoner:

- *follows the EMERALD Reasoners' general functionality*
- *With some new intermediate steps that*
 - process the receiving queries
 - send back the appropriate answer in RDF format

➤ **extended:**

- *“Proof Generator” to explain its conclusions*
- *“Proof Validator” to validate proofs provided by other agents (in defeasible logic)*



Overview

- *Motivation*
- *Standard rule/logic language use*
- *Proposal*
- *Semantics*
- *Proofs*
- *Proof Validation*
- *Our approach*
 - *EMERALD*
 - *Reasoners*
 - *DR-Prolog Rasoner*
- **Conclusions – Future Work**



Conclusions - Future Work

EMERALD

- a fully FIPA-compliant MAS developed on top of JADE
- proposes the use of trusted, independently-developed reasoning services

(REASONERS)

1. Can offer inferencing on a variety of logics
2. Can be used for related services such as
 - a) proof explanations on the inference results
 - b) Proof validations on exchanged proofs

In future:

- Integrate broader variety of reasoning and proof validation engines
- Integrate the generated proofs with trust mechanisms

EMERALD available at:

<http://lpis.csd.auth.gr/systems/emerald>

CS-566 Project available at:

[http://www.csd.uoc.gr/~hy566/
project2010.html](http://www.csd.uoc.gr/~hy566/project2010.html)

Thank you!
Any Questions?