

CROSS-COMMUNITY INTEROPERATION BETWEEN THE EMERALD AND RULE RESPONDER MULTI-AGENT SYSTEMS

Kalliopi Kravari¹, Taylor Osmun², Harold Boley² and Nick Bassiliades¹

¹Dept. of Informatics, Aristotle University of Thessaloniki, Greece

²Inst. for Information Technology, NRC Canada

Overview

➤ **Motivation**

➤ **Multi-Agent Systems**

- **EMERALD**
- **Rule Responder**

➤ **EMERALD – Rule Responder Interoperation**

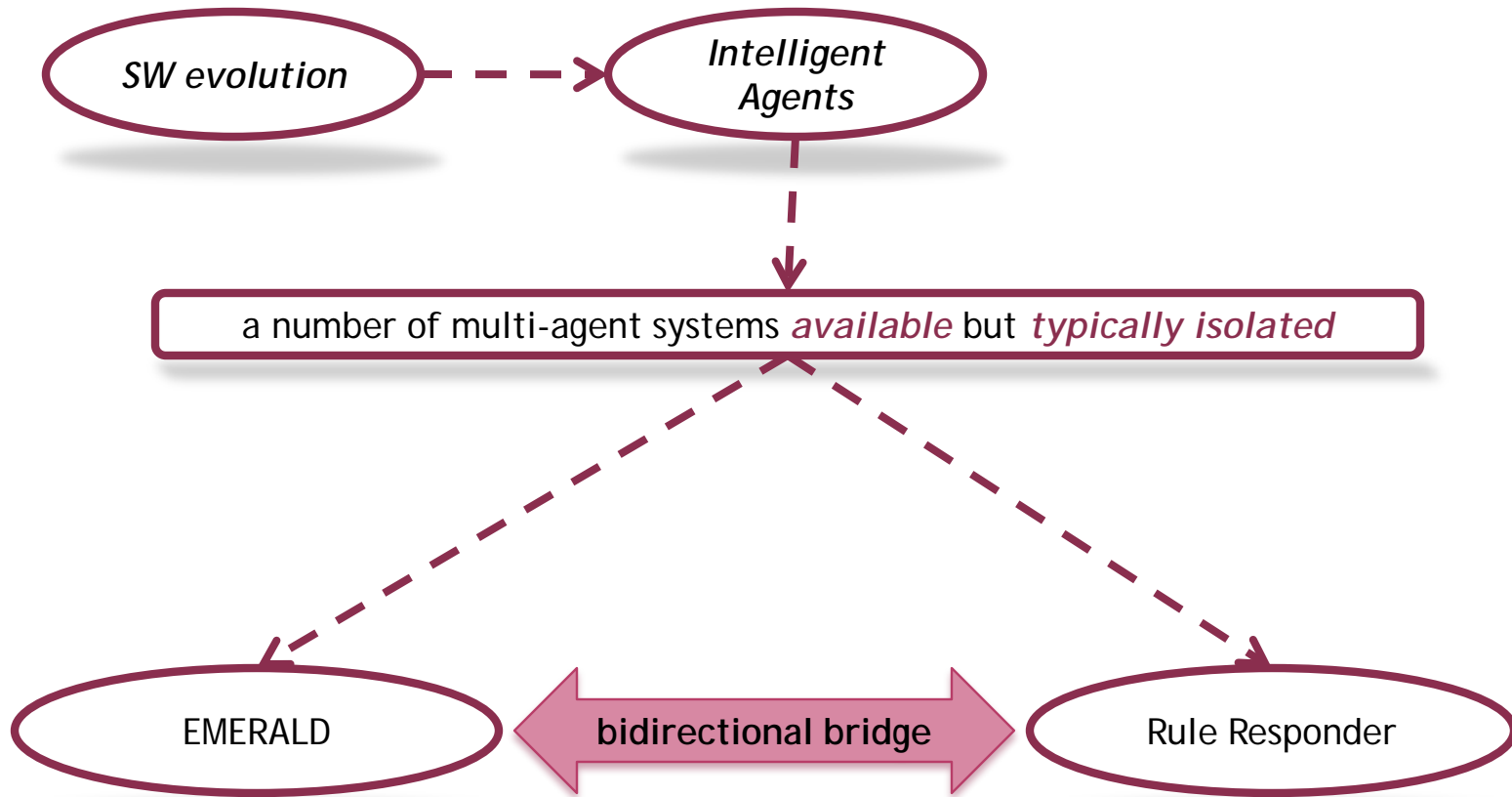
- **Comparison**
- **Gateway Architecture**

➤ **SymposiumPlanner**

- **Interoperation Use Case**

➤ **Conclusions – Future Work**

Motivation



Overview

➤ *Motivation*

➤ *Multi-Agent Systems*

- *EMERALD*
- *Rule Responder*

➤ *EMERALD – Rule Responder Interoperation*

- *Comparison*
- *Gateway Architecture*

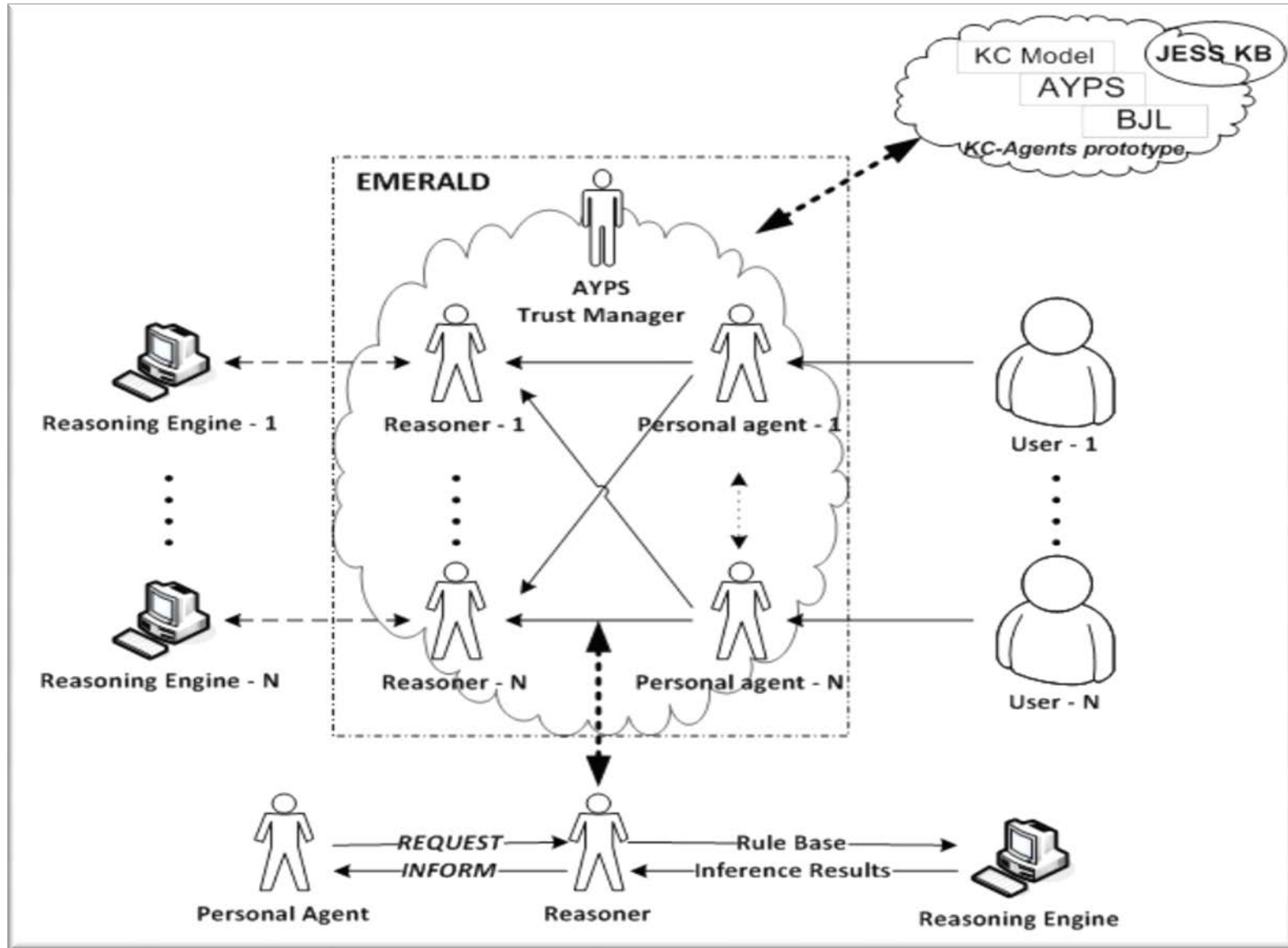
➤ *SymposiumPlanner*

- *Interoperation Use Case*

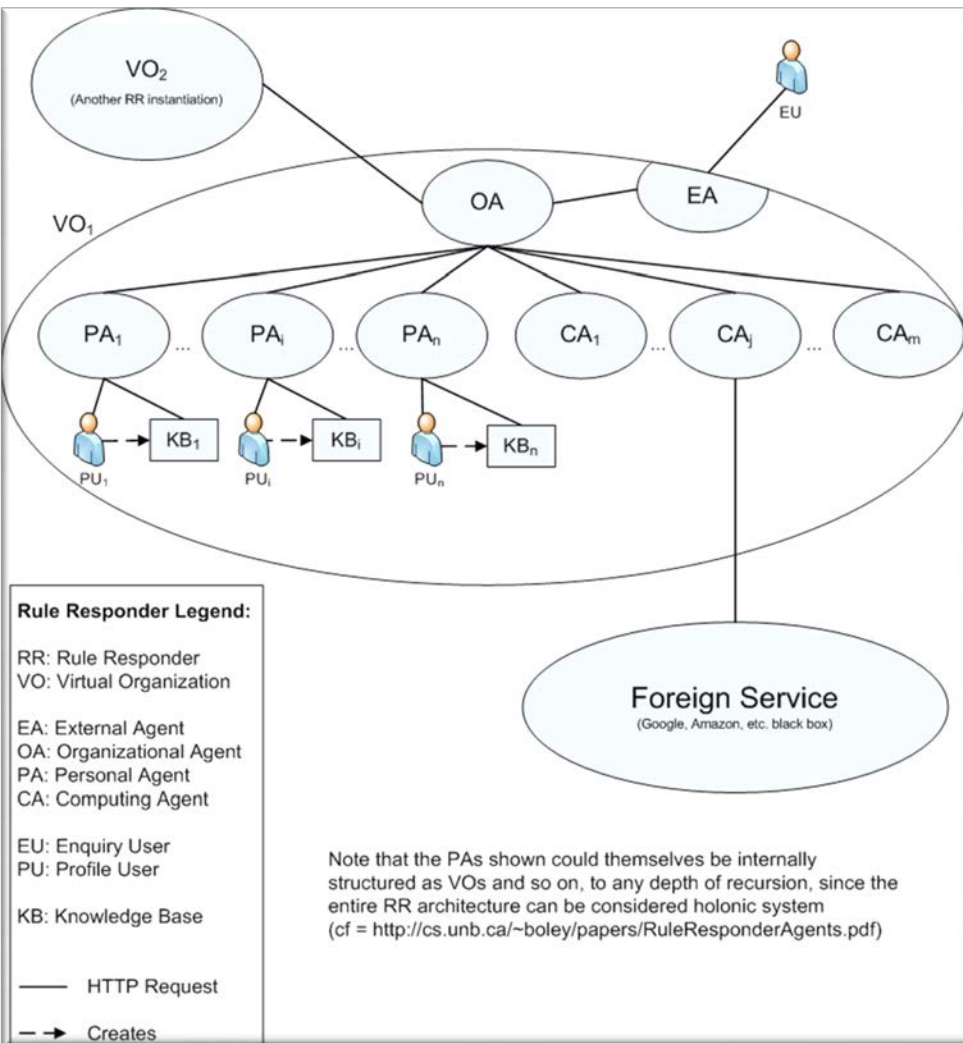
➤ *Conclusions – Future Work*

EMERALD

A Multi-Agent Knowledge-Based Framework



Rule Responder



- Open source framework
- Creating virtual organizations

- Provides the infrastructure for rule-based collaboration
- Assisting by semi-autonomous rule-based agents

OA: (global) goals/strategies
PA: assist single person
EA: Web interface/ queries
CA: perform automated task

Overview

➤ *Motivation*

➤ *Multi-Agent Systems*

- *EMERALD*
- *Rule Responder*

➤ *EMERALD – Rule Responder Interoperation*

- *Comparison*
- *Gateway Architecture*

➤ *SymposiumPlanner*

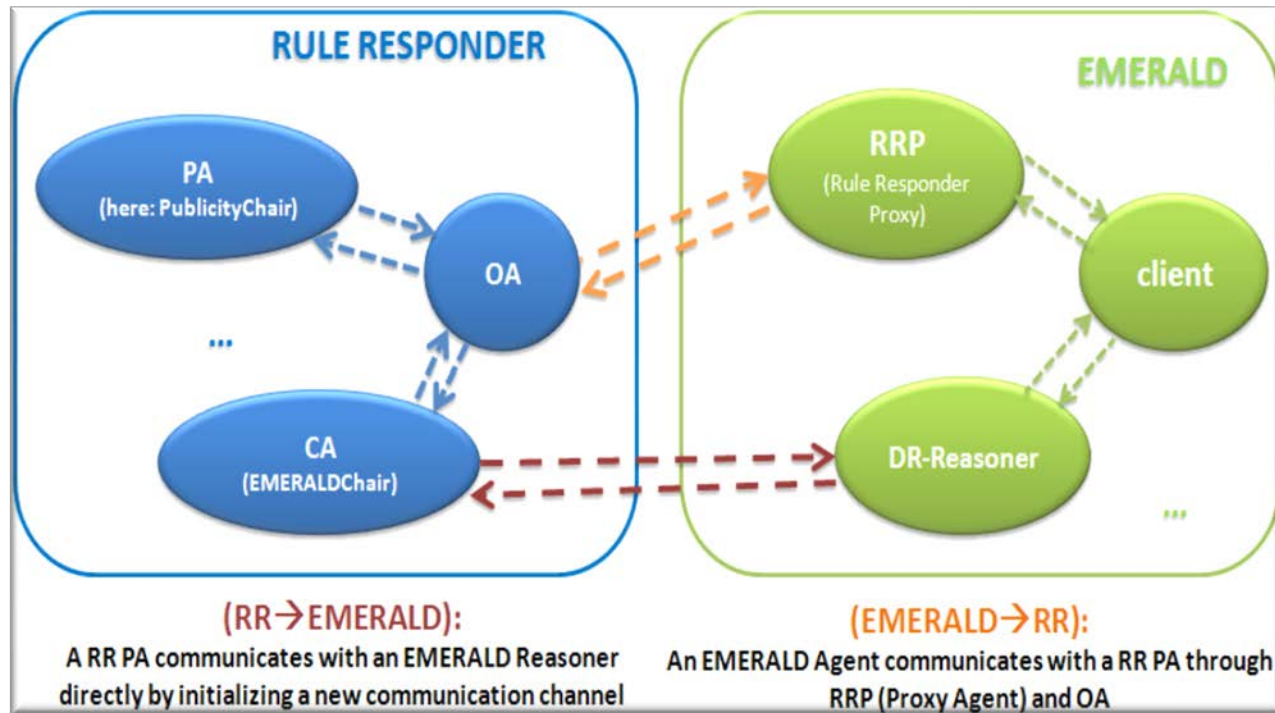
- *Interoperation Use Case*

➤ *Conclusions – Future Work*

EMERALD-Rule Responder Comparison

| | <i>Rule Responder</i> | <i>EMERALD</i> |
|-------------------------------|--|---|
| <i>Agent technology</i> | <i>Java servlets / Mule</i> | <i>Java (JADE) agents</i> |
| <i>Interchange principles</i> | <i>Mule middleware</i> | <i>JADE (ACL)</i> |
| <i>RuleML</i> | <i>Reaction RuleML</i> | <i>(D)R-DEVICE RuleML</i> |
| <i>Agent knowledge</i> | <i>Internal rule base Internal & External data-knowledge base</i> | <i>External rule base External data-knowledge base</i> |
| <i>Reasoning</i> | <i>Multiple reasoning engines and instances of reasoning engines</i> | <i>Multiple reasoning engines (independent external services)</i> |
| <i>Directory service</i> | <i>NO</i> | <i>AYPS</i> |
| <i>Use of Prova</i> | <i>OAs always written in Prova, PAs and CAs optionally</i> | <i>A Prova Reasoner has been developed (one of the reasoning agents) prova 3 not supported because it does not support JADE yet</i> |
| <i>Use</i> | <i>Use cases can be obtained as instantiations of the Rule Responder framework</i> | <i>Use cases can be obtained by using different reasoners and different agent behavior KBs</i> |

EMERALD-Rule Responder Gateway Architecture



EMERALD - RR

RRP: communicating directly with OA

RR - EMERALD

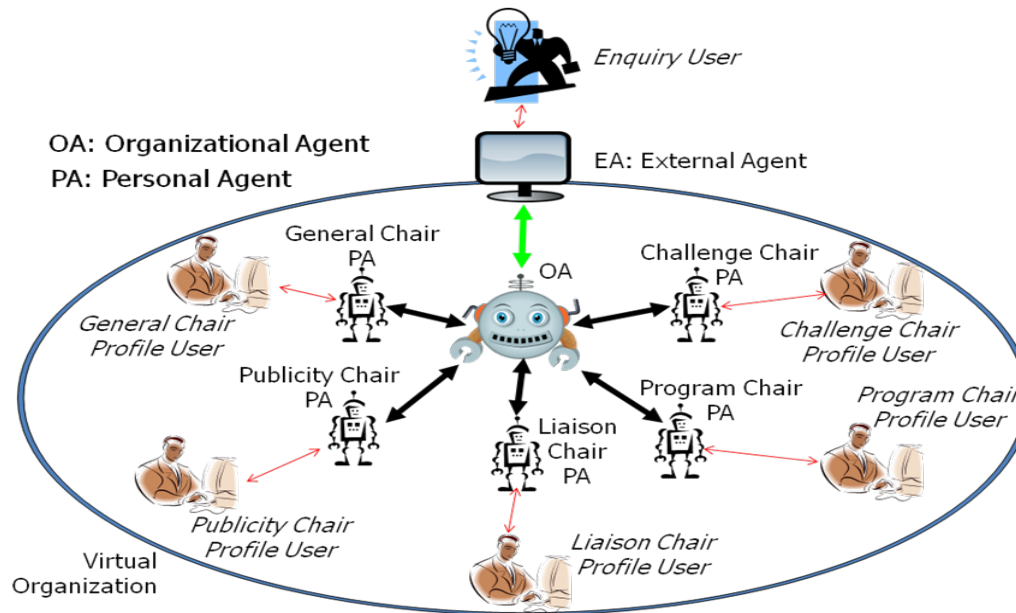
CA: handles appropriate communication channel

EMERALD - RR collaboration key feature: interchange of information

Overview

- **Motivation**
- **Multi-Agent Systems**
 - **EMERALD**
 - **Rule Responder**
- **EMERALD – Rule Responder Interoperation**
 - **Comparison**
 - **Gateway Architecture**
- **SymposiumPlanner**
 - **Interoperation Use Case**
- **Conclusions – Future Work**

SymposiumPlanner

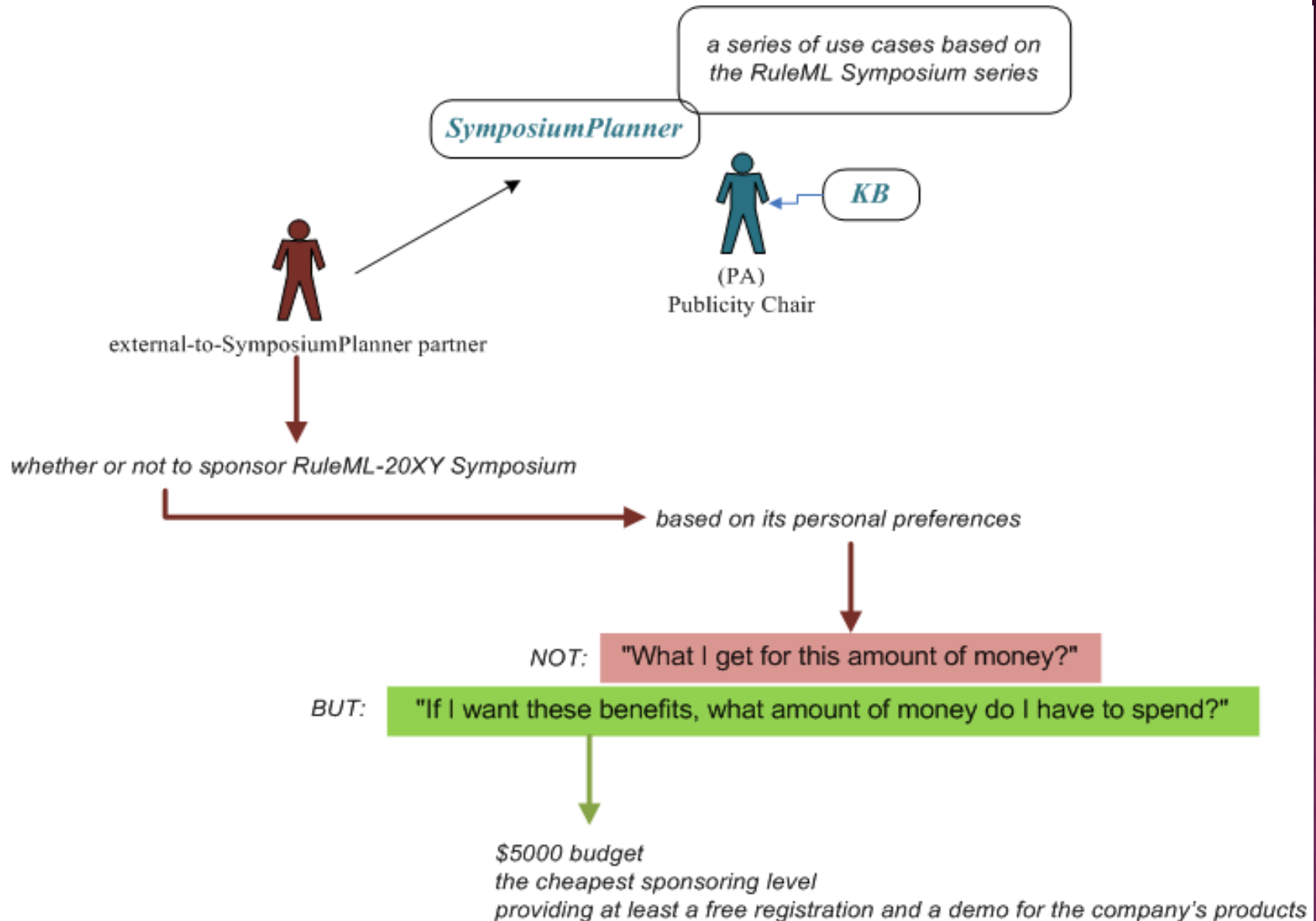


SymposiumPlanner: series of applications based on the RuleML Symposium developed with Rule Responder

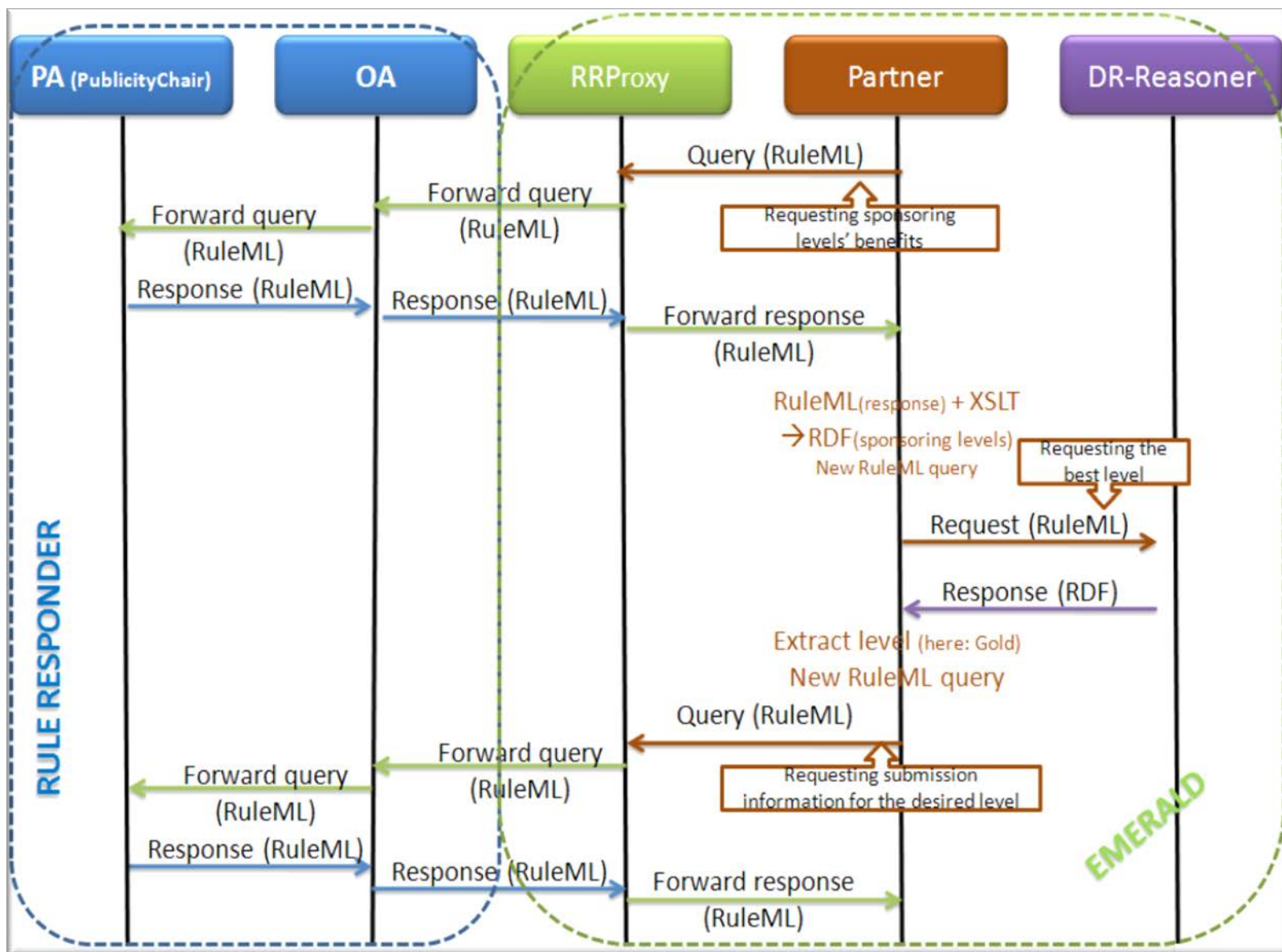
Inside the SP community each human chair (e.g. publicity chair) has a Personal Agent (PA) to assist him/her.

Each PA has a knowledge base containing the responsibilities of the position in order to answer queries relevant to the chair's role.

Interoperation Use Case



Exchanged messages



The Sponsoring Levels

Partner's preferences

- \$5000 max
- Cheapest sponsoring level
- At least one free registration
- Demo for the company's products

Sponsoring levels

| | | |
|----------|----------|---|
| Bronze | \$500 | Logo on website Acknowledgement in proceedings |
| Silver | \$1,000 | Bronze level benefits + Sponsor student participants |
| Gold | \$3,000 | Silver level benefits + Logo in proceedings Show demo 1 free registration |
| Platinum | \$5,000 | Gold level benefits + Name included in all advance publicity. Distribution of material to all participants. 1 additional free registration |
| Emerald | \$ 7,500 | Platinum level benefits + 1 additional free registration |

```

r1: possibleOffer(level->?x) :=
    sponsorLevel(level->?x).
r2: ~possibleOffer(level->?x) :=
    sponsorLevel(level->?x, demo->>false).
r3: ~possibleOffer(level->?x) :=
    sponsorLevel(level->?x, amount->?y), ?y > 5000.
r4: ~possibleOffer(level->?x) :=
    sponsorLevel(level->?x, free-registration->?y), ?y < 1.
    r2 > r1.          r3 > r1.          r4 > r1.
r5: makeOffer(level->?x) :=
    possibleOffer(level->?x),
    sponsorLevel(level->?x, amount->?z),
    \+ ( possibleOffer(level->?y), ?y \= ?x,
        sponsorLevel(level->?y, amount->?w), ?w < ?z ).
    
```

<Implies ruletype="defeasiblerule">

<oid><Ind uri="r4">r4</Ind></oid>

<head><Neg><Atom>

<op><Rel>possibleOffer</Rel></op>

<slot><Ind>level</Ind><Var>x</Var></slot>

</Atom></Neg></head>

<body><Atom>

<op><Rel uri="sp:SponsorLevel"/></op>

<slot><Ind uri="sp:level"/><Var>x</Var></slot>

<slot><Ind uri="sp:free-registration"/>

<ComplexArg><and_ComplexArg><Var>y</Var>

<Expr><Funn="yes"><</Fun><Var>y</Var><Ind>1</Ind></Expr>

</and_ComplexArg></ComplexArg></slot>

</Atom></body></Implies>

Overview

➤ **Motivation**

➤ **Multi-Agent Systems**

- **EMERALD**
- **Rule Responder**

➤ **EMERALD – Rule Responder Interoperation**

- **Comparison**
- **Gateway Architecture**

➤ **SymposiumPlanner**

- **Interoperation Use Case**

➤ **Conclusions – Future Work**



Conclusions - Future Work

Interoperation between EMERALD and Rule Responder



Bidirectional gateways

- *automated collaboration*
- *declarative, knowledge-based approach*

In future:

- Bidirectional RuleML-based gateways suite
- RuleML gateways adaptation in interoperation needs (interchange of proofs)
- More use cases
- Generalized gateway principles and architectures for cross-community agent interoperation

EMERALD: <http://lpis.csd.auth.gr/systems/emerald>

Rule Responder: <http://ruleml.org/RuleResponder>

SymposiumPlanner: <http://ruleml.org/SymposiumPlanner>

EMERALD - Rule Responder interoperation project:
<http://tinyurl.com/EMERALDRR>

Thank you!
Any Questions?